

REBAr Rebar Earth Bonding Anchor

For retrofit earthing of hollow spun concrete pole reinforcing cage.



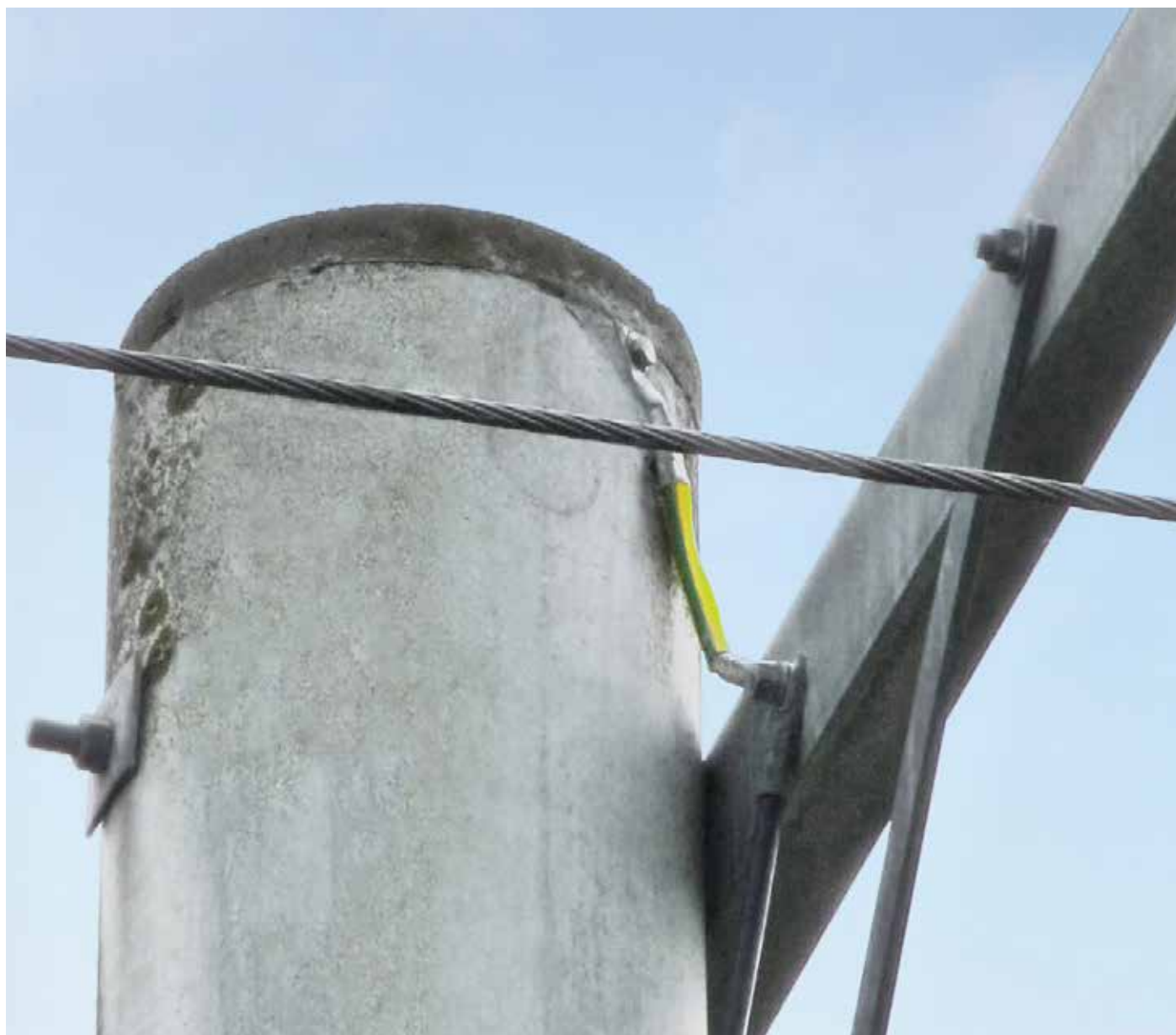
The Hamer REBAr provides a secure means of bonding the internal reinforcing cage of older hollow spun concrete poles to the external copper cable earthing system.

The REBAr is a stainless steel ferrule suitable for retrofitting onto poles that have external earthing leads fitted from the crossarms down to a driven earthing pin. It is fixed to the reinforcing cage under

the pole cap and bonded via a bonding lead to the top crossarm earthing point.

Three grub screws are supplied for fixing to the reinforcing cage, and a stainless steel bolt and Belleville washer supplied for attaching the bonding lead.

A work procedure is available developed in conjunction with Linetech Consulting.



REBAR Rebar Earth Bonding Anchor

Short circuit current rating

10 kA x 0.5 s

Requirement

One anchor per pole

Hamer code

FECHR044458

Materials

Grub screws	M10 x 10 stainless steel
Attachment bolt	M12 x 40 stainless steel
Belleville washer	M12 stainless steel
Anchor body	Stainless steel 304

Other literature available on request

Installation instruction (Linetech Consulting work procedure LWM 542) Drawing