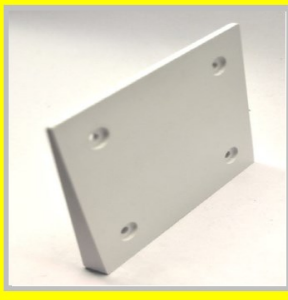


Mounting Blocks - Weather Board / Corrugated Iron

SURESET



Mounting Block for Weather Board

| Code | Description | Pack Qty |
|------|--------------------------------|----------|
| WBMB | 122mm W x 110mm H / Light Grey | 1 |

Easy to install mounting block to take the angle off any sloped surface such as weather board homes and structures. Four countersunk holes designed for screws to sit flush.



| Code | Description |
|------|--|
| WBMB | Sureset Mounting Block 122x110mm WB Light Grey For Weather Board |



Corrugated Mounting Block - Multi Purpose

| Code | Description | Pack Qty |
|-------|--|----------|
| CMBBK | 122mm ² Corrugated Black | 1 |
| CMBDG | 122mm ² Corrugated Dark Grey | 1 |
| CMBLG | 122mm ² Corrugated Light Grey | 1 |
| CMBWH | 122mm ² Corrugated White | 1 |

CMB corrugated mounting blocks are designed to suit the profile of Stratco corrugated iron. This mounting block provides a flat surface to mount a multitude of fixtures such as weatherproof power points, mini isolators, light fittings etc. Moulded with four countersunk mounting holes to align perfectly with the ridges of the corrugated iron.

Measures 122mm x 122mm with a projection from the wall of just 4mm.



Use two CMB mounting blocks for larger equipment.



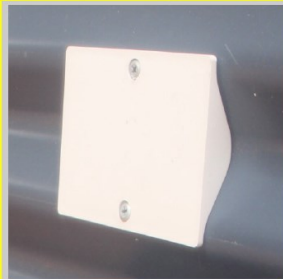
Provides a neat, professional finish for domestic situations.



| Code | Description |
|-------|---|
| CMBBK | Sureset Mounting Block 122mm ² BLACK for Corrugated Iron |
| CMBDG | Sureset Mounting Block 122mm ² DARK GREY for Corrugated Iron |
| CMBLG | Sureset Mounting Block 122mm ² LIGHT GREY Corrugated Iron |
| CMBWH | Sureset Mounting Block 122mm ² WHITE for Corrugated Iron |

Mounting Blocks - Weather Board / Corrugated Iron

SURESET



Horizontal + Vertical Corrugated Mounting Blocks

| Code | Description | Pack Qty |
|--------|---|----------|
| HCMBBK | 114 H x 84mm W Horiz. Corrugated Black | 1 |
| HCMBLG | 114 H x 84mm W Horiz. Corrugated L/Grey | 1 |
| VCMBBK | 84 H x 114mm W Vert. Corrugated Black | 1 |
| VCMBLG | 84 H x 114mm W Verti. Corrugated L/Grey | 1 |



Sureset HCMB + VCMB mounting block range, now provides a perfect fit for most varieties of weatherproof power points & smaller items such as mini Isolators, light fittings etc.

Available to suit the flow of either vertical or horizontal orientation in both Light Grey and Black with a projection from the wall of just 4mm.

Perfect width to suit most weatherproof outlets.

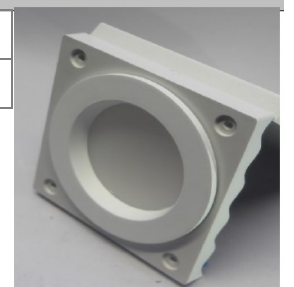
Note - VCMBLG Vertical pictured.

| Code | Description |
|--------|---|
| HCMBBK | Sureset Mounting Block Horiz BK 114mm H x 84mm W Black for Horizontal Corrugated Iron |
| HCMBLG | Sureset Mounting Block Horiz LG 114mm H x 84mm W L/Grey for Horizontal Corrugated Iron |
| VCMBBK | Sureset Mounting Block Vertical BK 84mm H x 114mm W Black for Vertical Corrugated Iron |
| VCMBLG | Sureset Mounting Block Vertical LG 84mm H x 114mm W L/Grey for Vertical Corrugated Iron |



Mounting Block for Mini Orb

| Code | Description | Pack Qty |
|------|---|----------|
| MOMB | 122mm ² Mini Corrugated Light Grey | 1 |



MOMB corrugated mounting blocks are designed to suit the profile of Stratco Mini Orb corrugated iron. This mounting block provides a flat surface to mount a multitude of fixtures such as weatherproof power points, mini isolators, light fittings etc.

Moulded with four countersunk mounting holes to align perfectly with the ridges of the corrugated iron.

Measures 122mm x 122mm with a projection from the wall of just 1cm.

With care, can be used to house downlights of 92mm cut out.

| Code | Description |
|------|--|
| MOMB | Sureset Mounting Block 122mm ² MINI Light Grey for Mini Orb Corrugated Iron |