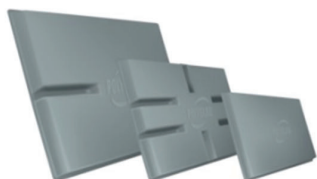


Order code: **PS339**

**Polyslab® AC Equipment Bases**



- Lightweight alternative to heavy concrete slabs
- Guaranteed to outlast the unit it supports
- Alleviates many health and safety issues associated with heavy, bulky concrete slabs
- Made from recycled materials & UV and impact resistant
- Great for air-conditioners, heat pumps, generators and more
- Three sizes to suit a variety of applications as follows;
- PSAC-SML - Small air-con units, pool pumps, camping equipment
- PSAC-MED - heat pumps, generators & 95% of domestic and light commercial split air-con units 2,5kW-15kW
- PSAC-LGE - Large ducted and min-split system air-con units

Hamer Code	Cat. Code	Dimensions L x W x D	Weight	Load Capacity	
<b>PS339</b>	PSAC-SML	640mm x 340mm x 51mm	2.1kg	160kg	
<b>PS465</b>	PSAC-MED	885mm x 465mm x 51mm	2.4kg	160kg	
<b>PS1130</b>	PSAC-LGE	1130mm x 650mm x 51mm	6.5kg	120kg	