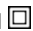


Datasheet - TESZ1102

Safety switch for hinged guards / Hinge safety switch / TESZ



- Thermoplastic enclosure
- Double-insulated 
- Good resistance to oil and petroleum spirit
- 111,5 mm x 92 mm x 36 mm
- 2 cable entries M 20 x 1.5
- Simple fitting, especially on 40 mm profiles

(Minor differences between the printed image and the original product may exist!)

Ordering details

| | |
|--------------------------|---------------|
| Product type description | TESZ1102 |
| Article number | 101028407 |
| EAN code | 4250116201662 |
| eCl@ss | 27-27-26-01 |

Approval


Approval



Classification

| | |
|---|--|
| Standards | EN ISO 13849-1 |
| B _{10d} Normally-closed contact (NC) | 2.000.000 |
| B _{10d} Normally open contact (NO) | 1.000.000 |
| Mission time | 20 Years |
| notice | $MTTF_d = \frac{B_{10d}}{0,1 \times n_{op}}$ $n_{op} = \frac{d_{op} \times h_{op} \times 3600 \text{ s/h}}{t_{cycle}}$ |

Global Properties

| | |
|--|---|
| Product name | TESZ |
| Standards | IEC/EN 60947-5-1, BG-GS-ET-15 |
| Compliance with the Directives (Y/N)  | Yes |
| Materials | |
| - Material of the housings | Plastic, glass-fibre reinforced thermoplastic, self-extinguishing |
| - Material of the contacts | Silver |
| - Material of the hinge | Aluminium |
| Housing coating | None |
| Weight | 420 g |

Mechanical data

| | |
|---------------------------------|---|
| Design of electrical connection | Screw connection |
| Cable entry M 20 x 1.5 | 2 |
| Cable section | |
| - Min. Cable section | 0,5 mm ² |
| - Max. Cable section | 1 mm ² |
| Mechanical life | > 1.000.000 operations |
| Switching frequency | max. 120/h |
| notice | All indications about the cable section are including the conductor ferrules. |
| Positive break angle | 10° |
| Positive break force | 1 N |
| additional hinge (Y/N) | Yes |
| mounting hinge (Y/N) | Yes |

Ambient conditions

| | |
|----------------------------------|--------|
| Ambient temperature | |
| - Min. environmental temperature | -25 °C |
| - Max. environmental temperature | +65 °C |
| Protection class | IP65 |

Electrical data

| | |
|--|--|
| Design of control element | Normally open contact (NO), Opener (NC) |
| Switching principle | Creep circuit element |
| Number of auxiliary contacts | 1 piece |
| Number of safety contacts | 2 piece |
| Rated impulse withstand voltage U _{imp} | 2.5 kV |
| Rated insulation voltage U _i | 250 V |
| Thermal test current I _{the} | 2.5 A |
| Utilisation category | AC-15: 230 V / 2 A, DC-13: 24 V / 1 A |
| Max. fuse rating | 2 A gG D-fuse |

ATEX

| | |
|---|------|
| Explosion protection categories for gases | None |
| Explosion protected category for dusts | None |

Dimensions

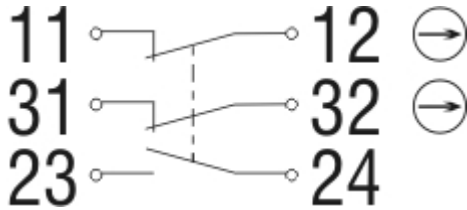
| | |
|--------------------------|----------|
| Dimensions of the sensor | |
| - Width of sensor | 111.5 mm |

| | |
|--|-------|
| - Height of sensor | 92 mm |
| - Length of sensor | 36 mm |
| Suitable for mounting to profile systems | 40 mm |

notice

The additional hinge including mounting accessories is also available separately, part number Z 400
The opening angle has been set to 4° in factory.

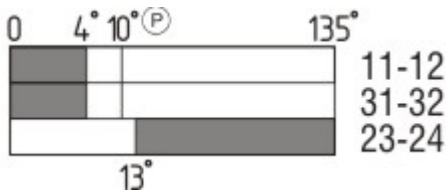
Diagram



Note Diagram

- positive break NC contact
- active
- no active
- Normally-open contact
- Normally-closed contact

Switch travel diagram



Notes Switch travel diagram

- Contact closed
- Contact open
- Setting range
- Break point
- Positive opening sequence/- angle
- VS** adjustable range of NO contact
- VÖ** adjustable range of NC contact
- N** after travel

Ordering code

TESZ(1)(2)(3)(4)/(5)(6)/(7)

| | |
|---------|--|
| (1) | |
| without | Material of the hinge Aluminium |
| X | Material of the hinge Stainless steel |
| (2) | |
| R | mechanische Wiederanlaufsperr |
| (3) | |
| 10 | 1 Opener (NC) |
| 102 | 1 Opener (NC) / 1 Normally open contact (NO) |

| | |
|----------------|--|
| 110 | 2 Opener (NC) |
| 1102 | 2 Opener (NC) / 1 Normally open contact (NO) |
| 1110 | 3 Opener (NC) |
| (4) | |
| <i>without</i> | Screw connection |
| ST1 | male connector bottom (M12, 8-pole) |
| ST2 | Connector above (M12, 8-pole) |
| (5) | |
| <i>without</i> | with additional hinge |
| S | without additional hinge |
| (6) | |
| 30 | Suitable for mounting to profile systems 30 mm |
| 35 | Suitable for mounting to profile systems 35 mm |
| <i>without</i> | Suitable for mounting to profile systems 40 mm |
| 45 | Suitable for mounting to profile systems 45 mm |
| (7) | |
| <i>without</i> | switching angle Opener (NC) at 4° |
| 5° | switching angle Opener (NC) at 5° |
| 8° | switching angle Opener (NC) at 8° |

Documents

Datasheet (de) 901 kB, 10.09.2012

Code: kteszp01

Datasheet (en) 1 MB, 10.09.2012

Code: gteszp02

Operating instructions and Declaration of conformity (de) 390 kB, 17.06.2014

Code: mrl_tesz_de

Operating instructions and Declaration of conformity (fr) 340 kB, 15.10.2014

Code: mrl_tesz_fr

Operating instructions and Declaration of conformity (fr) 469 kB, 26.07.2012

Code: mrl_tesz_fr

Operating instructions and Declaration of conformity (es) 341 kB, 08.08.2014

Code: mrl_tesz_es

Operating instructions and Declaration of conformity (nl) 339 kB, 02.10.2014

Code: mrl_tesz_nl

Operating instructions and Declaration of conformity (en) 391 kB, 17.06.2014

Code: mrl_tesz_en

Operating instructions and Declaration of conformity (it) 336 kB, 06.08.2014

Code: mrl_tesz_it

Operating instructions and Declaration of conformity (cs) 469 kB, 07.09.2012

Code: mrl_tesz_cs

Operating instructions and Declaration of conformity (da) 474 kB, 23.08.2012

Code: mrl_tesz_da

Operating instructions and Declaration of conformity (jp) 429 kB, 06.08.2014

Code: mrl_tesz_jp

Operating instructions and Declaration of conformity (pl) 406 kB, 04.03.2015

Code: mrl_tesz_pl

Operating instructions and Declaration of conformity (pt) 472 kB, 07.09.2012

Code: mrl_tesz_pt

BG-test certificate (de) 152 kB, 11.06.2014

Code: z_tesp04

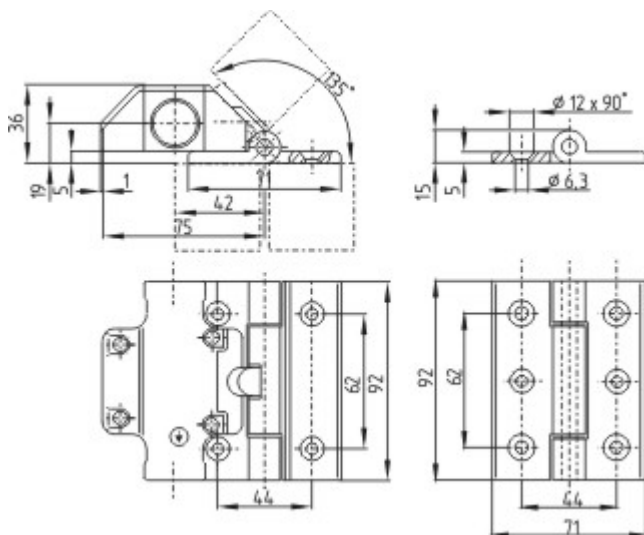
BG-test certificate (en) 146 kB, 11.06.2014

Code: z_tesp05

EAC certification (ru) 844 kB, 05.10.2015

Code: q_6037p17_ru

Images



Dimensional drawing (basic component)

K.A. Schmersal GmbH & Co. KG, Mödinghofe 30, D-42279 Wuppertal

The data and values have been checked thoroughly. Technical modifications and errors excepted.

Generiert am 01.02.2016 - 02:20:57h Kasbase 3.2.1.F.64I