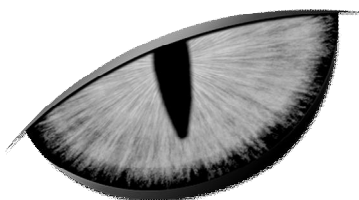


# NightWatcher



## NW601 + NW601USB User Manual



# NightWatcher

## NW601 + NW601USB

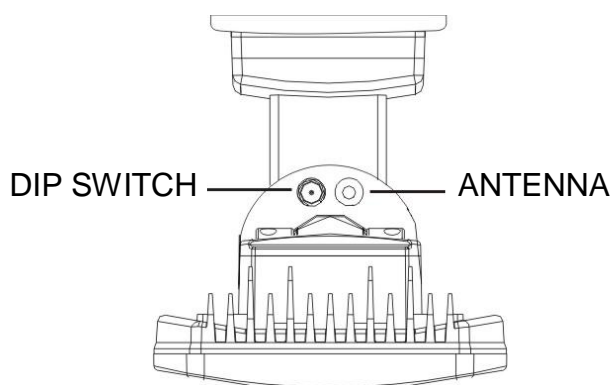
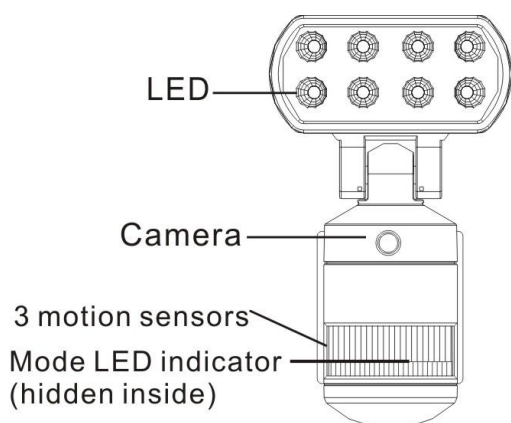
### User Manual

## THE INTELLIGENT MOTION SENSOR TRACKING LIGHT

### INSTALLATION INSTRUCTIONS

*Read all instructions before proceeding with the installation*

### OVERVIEW OF NW601



### IMPORTANT: THE INSTALLATION OF THIS FITTING MUST BE DONE BY A QUALIFIED ELECTRICIAN.

- § This fitting must be earthed.
- § Do not mount the luminaire against inflammable surfaces.
- § The motion detector will not operate correctly if it is installed:
  - Near the outlet of a central heating boiler
  - Near air conditioning plant
  - Pointing directly at moving vehicles
  - Within sight of reflection from moving water
  - Where other lamps could shine onto the detector

#### **WARNING !!!**

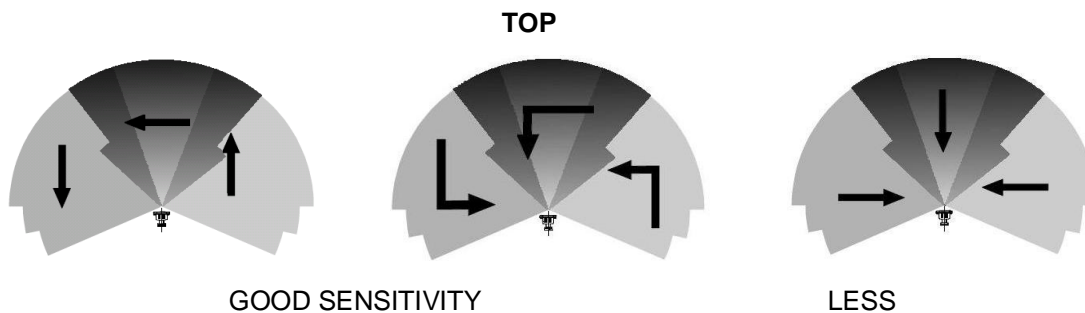
BEFORE ATTEMPTING ANY INSTALLATION OR MAINTENANCE, ENSURE THAT THE ELECTRICAL SUPPLY IS SWITCHED OFF AND THE CIRCUIT FUSES REMOVED OR THE CIRCUIT BREAKER IS IN THE "OFF" POSITION.

## NOTE:

- This highly responsive unit may occasionally activate due to rapid environmental changes.
- Allow for approximately 30 seconds warm-up time before the sensor resumes normal activity.
- Please make sure the voltage and polarity are correct before connection.
- Incorrect voltage may cause electric shock. If you are not sure, please contact your retailer.
- DO NOT remove the tape until you finish the installation.
- If the tape comes off the light, please replace it or hold the light head to avoid swivelling and damage the to product.

## **MOUNTING THE FITTING**

To ensure correct operation of the sensor, mount the luminaire where traffic passes across the detector zone or area.

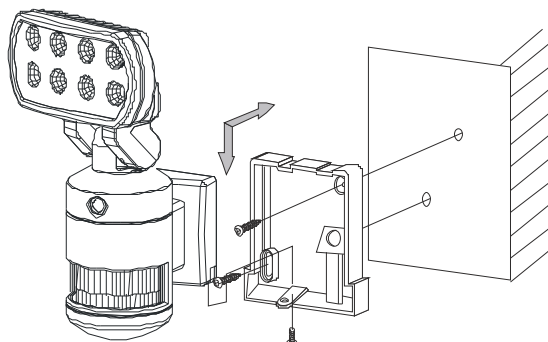


## **INSTALLATION AND WIRING INSTRUCTIONS**

Remove the inset back mounting box from the luminaire. Fit the inset back mounting box onto the wall and tighten the screws at a height that ensures adequate coverage of the area by the infrared detector. The minimum installation height is 2 metres. And the maximum height is 3 metres.

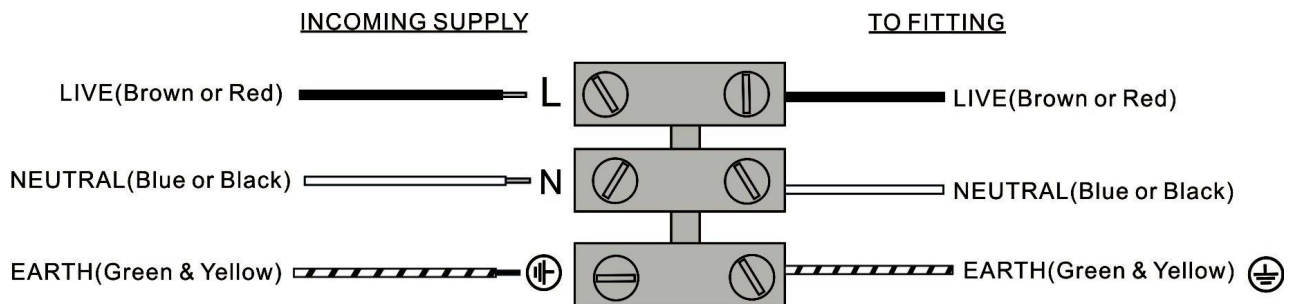
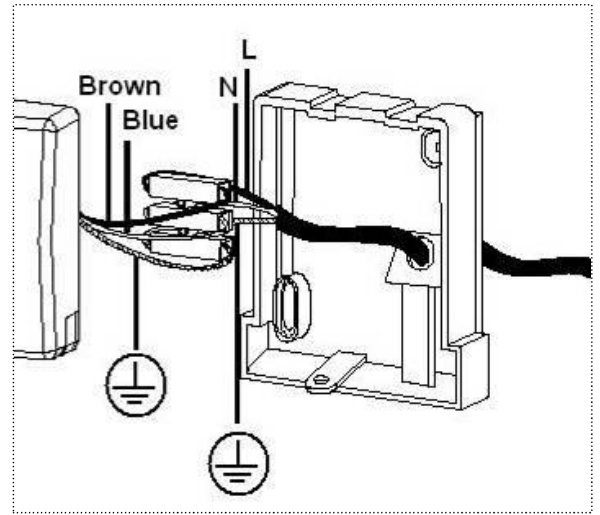
**\*Please make sure the voltage and polarity are correct before connection. Incorrect voltage may cause electric shock. If you are not sure, please contact your retailer.**

**NOTE: DO NOT REMOVE THE SECURING TAPE ON THE FITTING UNTIL THE UNIT IS FULLY INSTALLED.**



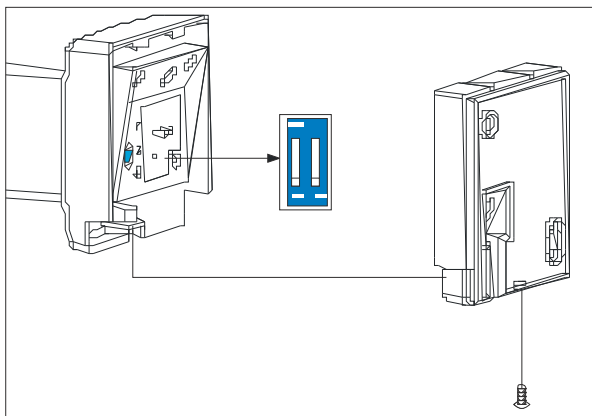
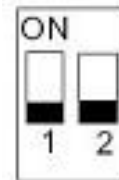
## WIRING INSTRUCTIONS

- § Feed the cable through the back mounting box and bush the cable entry to avoid abrasion to the cable.
- § Connect the earth wire to the connector opposite the green/yellow cable.
- § Connect the brown phase conductor active to the connector opposite the brown cable and tighten the screws.
- § Connect the blue neutral conductor to the connector opposite the blue cable and tighten the screws.
- § Check that all connections are correct and tight, as any misconnections will damage the detector.
- § Re-fit the fitting to the back mounting box.



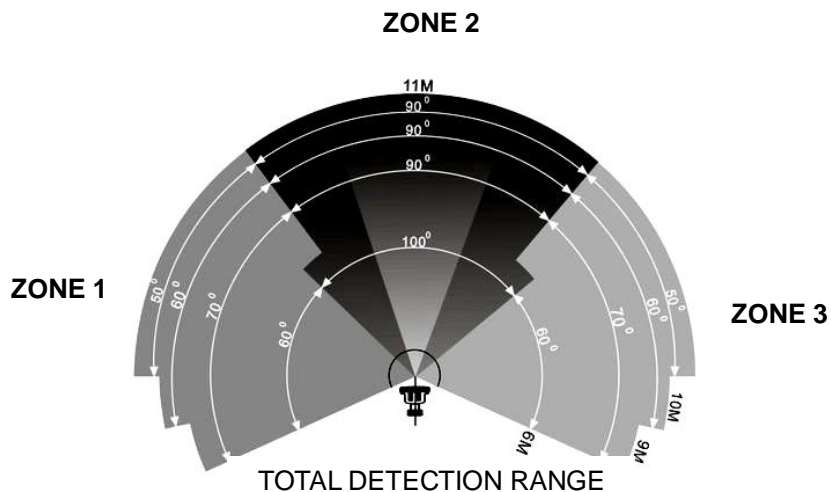
## SETTING THE LIGHT UP TIME & SENSITIVITY

- § Remove the back mounting box from the fixture by unscrewing the screw at the bottom.
- § Set the Light up time & Sensitivity you prefer:
  - Light up time (OFF : 30 seconds / ON : 60 seconds (default))
  - Sensitivity (OFF : 5m / ON : 10m (default))
- § Re-fit the back mounting box and tighten the screw.

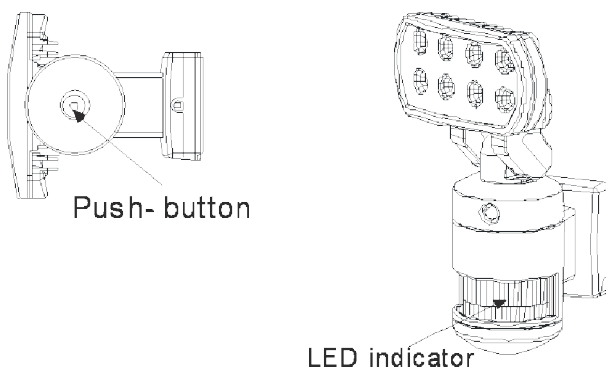


## FUNCTION

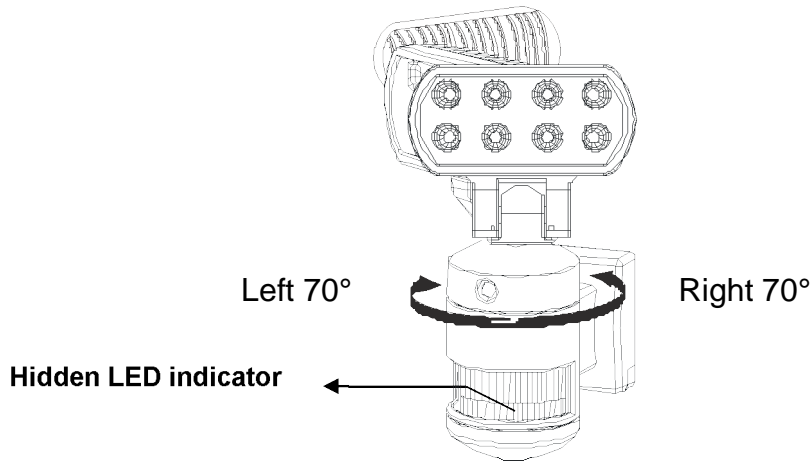
This light is equipped with 3 motion sensors: zone 1 covers 60 degree; zone 2 covers 100 degrees and zone 3 covers 60 degrees; 220 degrees (maximum) in total for 3 zones.



- § The light will switch on for 30 / 60 seconds and off automatically when heat/ movement is detected.
- § Push-button for programmable functions:
  - **Test mode:** light and camera works day and night (the hidden LED indicator will turn on in RED)
  - **Auto mode:** light works at night, camera works day and night (the hidden LED indicator will turn off)
- § The factory default: the mode is 'Auto mode'.
- § To change the mode to daytime (Test mode), push the button at the bottom of the housing and the hidden LED indicator will turn on in this mode. The light will be on at 30 /60 seconds when detecting any movement at night.



- § **Reset function:** If the stepper motor of tracking light works abnormally, the hidden LED indicator will flash in red and the light will stop turning automatically. In Test mode, the red LED will flash for 3 times in 5 seconds and off for 5 seconds; in 'Auto mode', the red light will flash in a regular pattern. Please simply switch off and then on the main power to resume the tracking light.
- § Below are the possible abnormal situations.
  - **External force:** the light head is blocked by objects or is blown by strong wind and is unable to turn properly; the hidden LED will flash in red to signal users the abnormal situation.
  - **Stepper motor:** when stepper motor is going to be out of its lifetime or is damaged, the hidden LED will flash in red to signal users of the abnormal situation. Please switch off and then on the main power, the tracking light now may or may not resume its operation. If the stepper motor stops working, NW601 becomes a regular motion sensor security light.



## **OPERATION**

1. After Installation- in 'Test Mode': light works on Day and Night.

**NOTE:** Allow approximately 30 seconds warm-up time before the sensor resumes normal activity.

2. To test, walk through the sensor's detection area.

3. Movement will activate the sensor and turn the light on; the light will turn the face to the detected zone.

4. After the light is activated, **keep out of detection area** and the light will switch off automatically after light up time (30/ 60 seconds). The light will be activated again when detecting any movement.

If there is continuing movement in the detection zone, the light will stay on until movement ceases (after light up time).

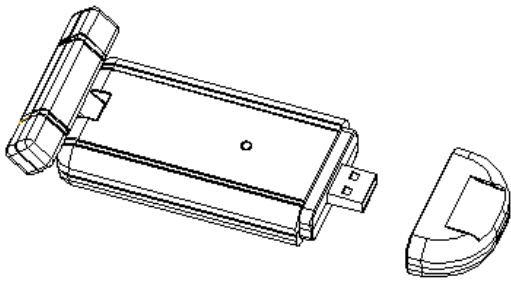
**NOTE: THE INTELLIGENT MOTION SENSOR TRACKING LIGHT IS DESIGNED TO ILLUMINATE WHEN THE DETECTION AREA IS ENTERED BY A PERSON AND WILL DETECT THE MOVING HEAT SOURCE. THERE IS NO GUARANTEE IMPLIED THAT IT WILL PROVIDE TOTAL SECURITY OR PREVENT ILLEGAL ENTRY.**

## **SPECIFICATION**

Detection Method:	Passive Infrared Sensor (with continuously detect function)
Sensor Range:	10m x 190° (maximum)
Camera:	Colour CMOS image sensor View angle 60°
Transmission frequency:	ISM 2.4GHz ARIB-T66
Image size:	640 x 480 resolution AVI (movie) file or JPEG (picture) file
Power source:	AC 100V-240V 50/60Hz
Time adjustment:	30 / 60 seconds
Sensitivity adjustment:	5m / 10m
Operation Temperature:	0°C ~ +50°C
IP RATING:	IP 55 RATING. Suitable for outdoors; permanent use. Tested to the relevant AS/ NZ standards

# NW601USB WIRELESS USB RECEIVER

## I. OVERVIEW OF NW601USB



## II. INSTALLING NIGHT GUARD DRIVER ON YOUR COMPUTER

- § Install the Night Guard Driver onto your computer: insert CD, click drivers, select the operating system for your computer and double click on DPInst.
- § Follow the instructions on the installation screen
  - **Night Guard InstallShield Wizard** (Fig. 1) → click **Next** → **License Agreement** (Fig. 2) → select I accept the terms of the license agreement → click **Next** → **Ready to Install** (Fig. 3) → click **Install** → **Device Driver Installation Wizard** (Fig. 4) → click **Next** → **Completing the Device Driver Installation Wizard** (Fig. 5) → click **Finish** → **InstallShield Wizard Complete** (Fig. 6) → **Finish** → Restart windows.

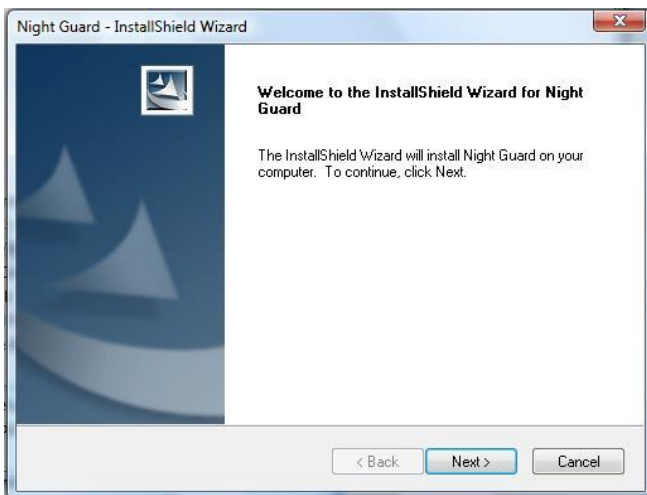


Fig. 1

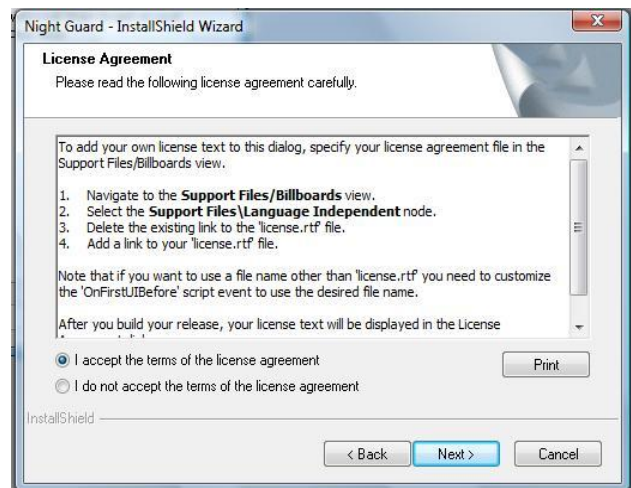


Fig. 2

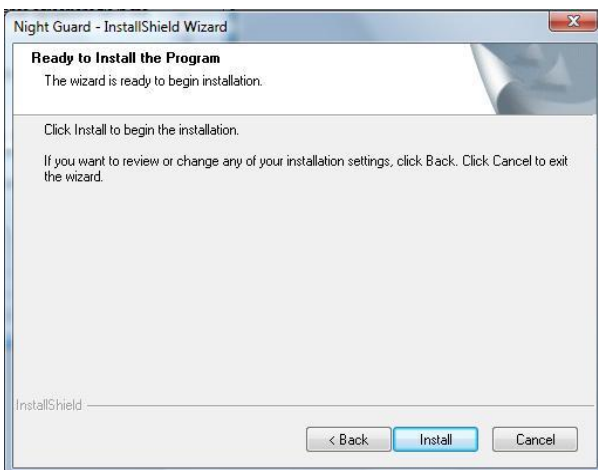


Fig. 3

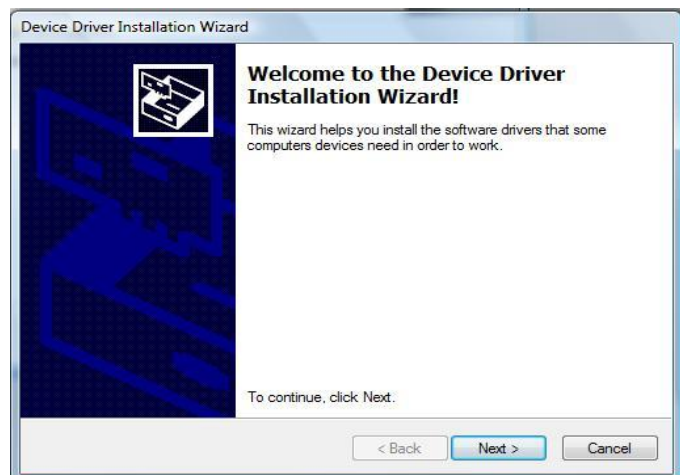


Fig. 4



Fig. 5

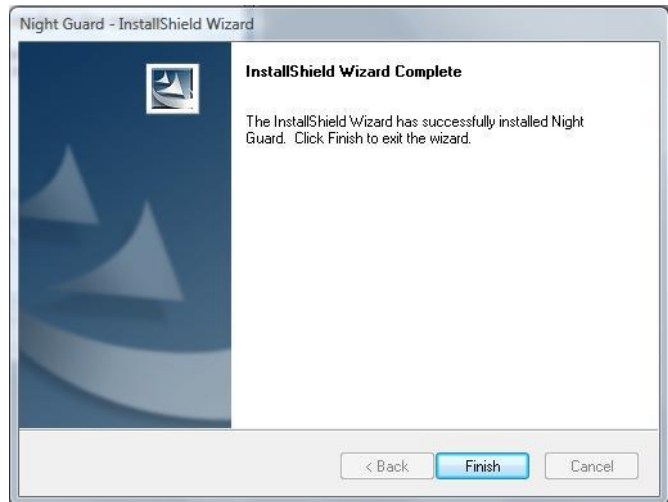


Fig. 6

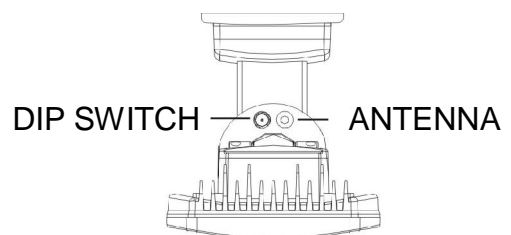
- § If your computer doesn't run the installation program automatically, please click the "Start" button and choose "Run." Then browse your computer to find CD slot and Driver and click "Setup".

### III. INSTALLING NW601USB

Once your system has restarted you will need to choose the USB slot the receiver will remain in. This will determine the USB address for the device. This cannot be changed at a later time unless the software is reinstalled. Please use the same USB slot when running the Night Guard system.

- § Plug in the USB receiver and wait for the confirmation beeps from your computer (two beeps).
- § Your computer should start looking for the correct USB drivers installed with your software program.
- § If your computer does not properly install the software open the Control Panel, select Add or Remove Programmes and manually add the Night Guard programme.
- § If there is an exclamation point next to the 'digital wireless camera' do the following:
  - § Select digital wireless camera and right click with your mouse.
  - § Select properties.
  - § Reinstall driver.
- § If the computer recognizes the software driver, you are ready to begin using the program:

- § Ensure there is power to the NW601.
- § Plug the NW601USB into a USB port on your computer.
- § Allow 10 seconds for the NightGuard icon to show on screen.
- § Double click NightGuard icon:



- § Once the programme is running, click set up and scroll down to device setup from the drop down menu.
- § A box will open and it will show 4 cameras. Choose the number of the channel you wish to view (Fig. 8).
- § Once a camera is selected there is a 10 second count down time to synchronize the NW601 (Fig. 10 & 11.).
- § Press and hold the **Dip Switch** button of the required NW601 (within the 10 second countdown) until it is registered with the programme.
- § When the video is shown on screen the channel setup is completed (Fig. 12).

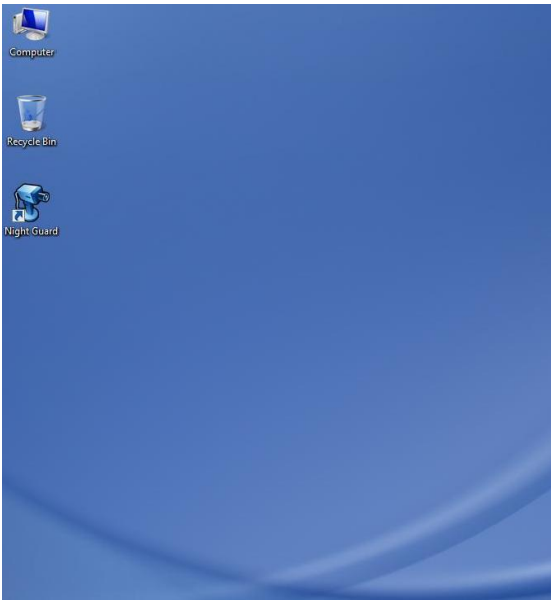


Fig. 7

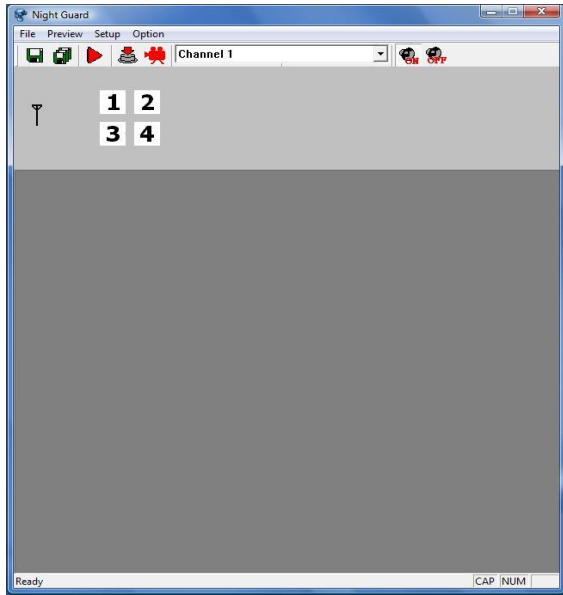


Fig. 8

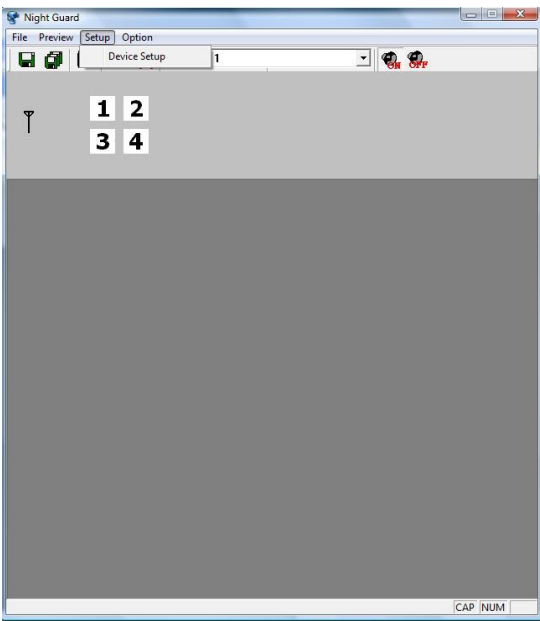


Fig. 9

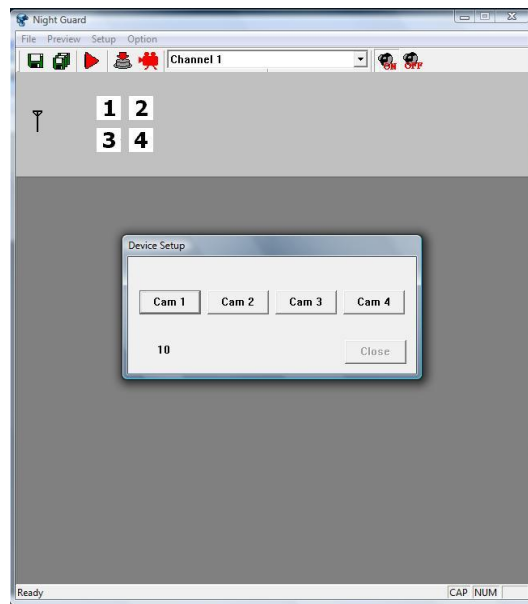


Fig. 10

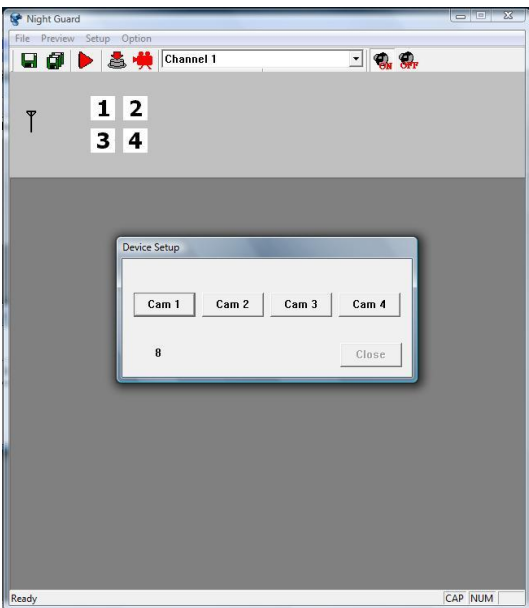


Fig. 11

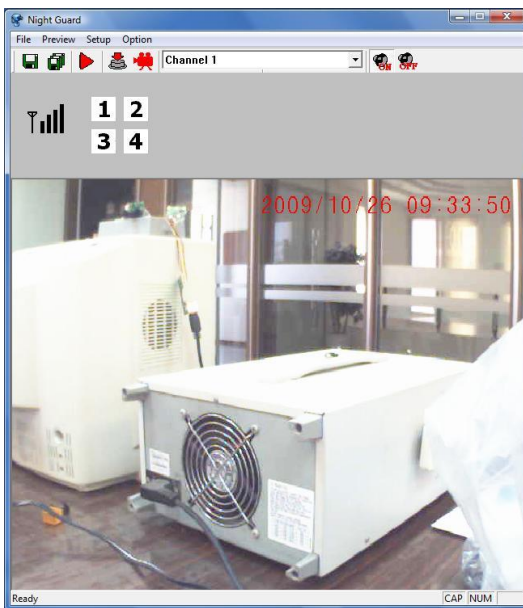
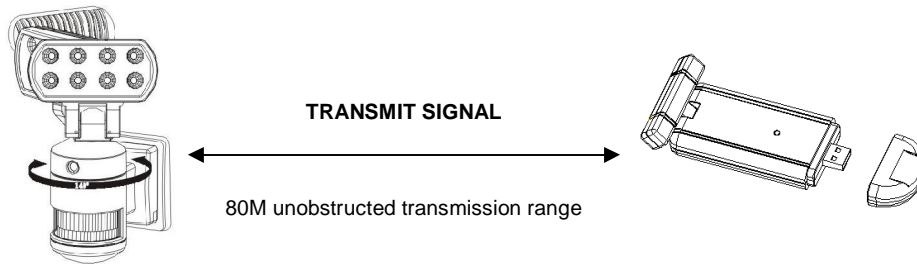


Fig. 12

## IV. OPERATION

When NW601 detects any movement, it will send the digital wireless signal to the NW601USB and the detection image will be shown on your computer at the same time (dependant on installing the NW601USB onto your computer and opening the NightGuard software). The unobstructed transmission effective range is about 80 meters, but actual transmission range may vary according to weather, location, interference and building. This USB wireless receiver can receive up to a maximum of 4x NW601 images at the same time.



## V. MENU

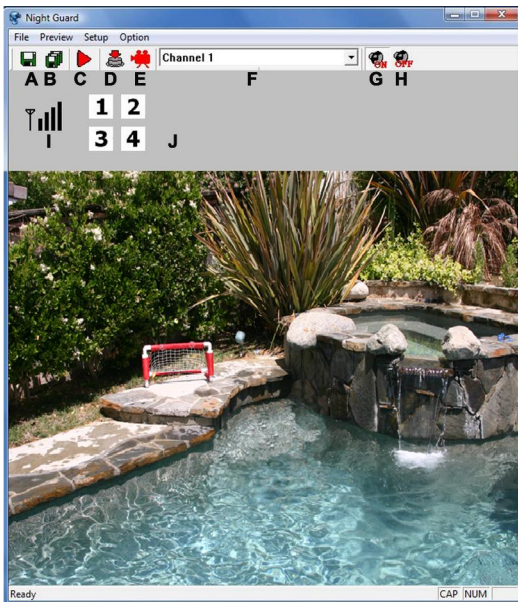



Fig. 14




Fig. 15

A :  **Single file save.** Manually save a file to C:\Video.


All files saved will be recorded in a folder called **C:\video**. You can move these files later to any location. Still images recorded will be in JPG format and can be viewed by any picture viewer. All video images will be stored in AVI format and can be viewed in Windows media player. An AVI driver may be necessary to view these film clips. This code can be downloaded from Microsoft.

B :  **Multi files save.** This will record all of the files saved during a session on Manual record. The files will be displayed within the program and then saved to **C:\video**.

C :  **Auto recording.** When this button is depressed the unit will automatically record for approx 12 seconds once motion is detected from the passive infrared sensors in the sensor light. These files will also be stored in **C:\Video**. The files vary in size depending on the settings and the amount of complexity in the image. Caution should be used in choosing this setting. If your sensor light is in a location where it will not often be triggered it will not record


many files. If the sensor light is in a high traffic area it could almost always be recording. This can fill a small hard drive quickly. This setting will depend on your own personal needs and the size of the hard drive. The average clip size is approximately 2.5 Mb. of disk space. These clips can be deleted when necessary. The clips will be time and date stamped and they can be identified by the date of the clip. The time and date stamp is based on the computer time within your system. Please insure the computer is set to the correct date and time.


D :  **Manual recording.** Photo- Capture Photo, JPG Image.

E :  **Manual recording.** Clip – Record video, AVI Movie.



F : The user can select Channels 1 to4 for Single viewing or quad view if more than one camera is attached to the system. Sensor lights sold separately. In quad mode the system will display 1 to 4 cameras.

G / H :  **Alarm ON / OFF.** When the alarm feature is enabled, a tone will played through the computers speakers when the sensor light has been activated. Use this if an audible warning is desired. The volume of this warning depends on the computers volume.

I :  **RX and TX signal strength.** This is a gauge of the signal strength or the camera being viewed. It will not operate in Quad mode.

J : **Detection alert.** The background of any triggered sensor will illuminate RED when the sensor is triggered.

## VI. SYSTEM MENU

FILE	PREVIEW	SETUP	OPTION
Save active item	Start preview	Device setup	Video property
Save all items	Stop preview		De- flicker
Exit programme			Exposure
			Brightness
			Saturation
			Gamma

## IMPORTED AND DISTRIBUTED BY:



**0800 239 239**

[www.nightwatcher.co.nz](http://www.nightwatcher.co.nz)

[www.hamer.co.nz](http://www.hamer.co.nz)

CODE	PRODUCT
NW601	Nightwatcher NW601 LED type with Wireless Camera - Black
NW601W	Nightwatcher NW601W LED type with Wireless Camera - White
W601USB	Nightwatcher Wireless USB Receiver