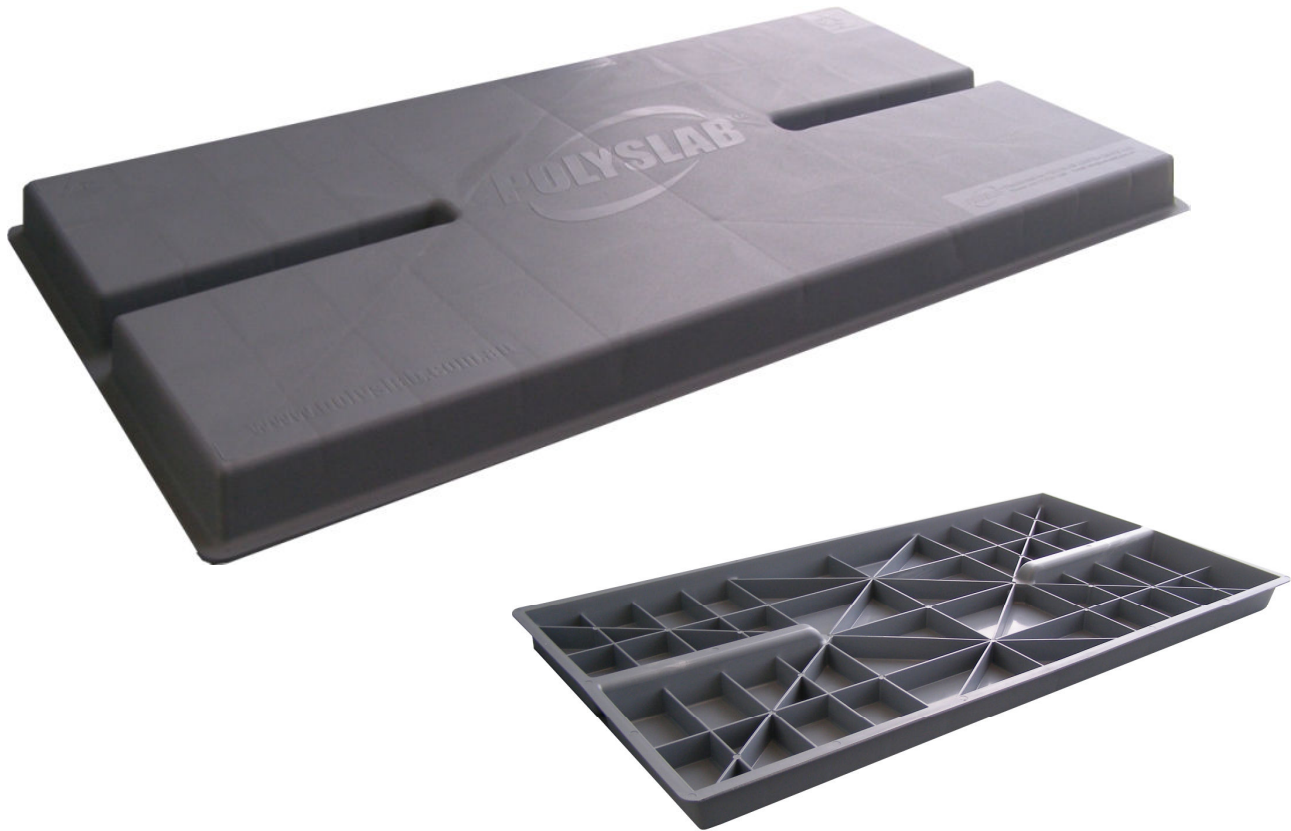


POLYSLAB

November 2011



Motor Acc., Refridg. & A/C
POLYSLAB



D5



'CONCRETE IS HISTORY...'

Phone 0800 239 239
Fax 0800 231 231
Email sales@hamer.co.nz
www.hamer.co.nz

Bringing you the best

HAMER
LIMITED

Polyslab Products

Small Polyslab

| Hamer Code | Reference Number | Size | Weight | Load Capacity |
|------------|------------------|------------------|--------|---------------|
| PS339 | PSAC-SML | 339 x 639 x 51mm | 2.1kg | 120kg |

Ideal for small one horsepower air conditioning units, pool and irrigation pumps and camping equipment.



Medium Polyslab

| Hamer Code | Reference Number | Size | Weight | Load Capacity |
|------------|------------------|------------------|--------|---------------|
| PS465 | PSAC-MED | 465 x 885 x 51mm | 2.4kg | 120kg |

Built to suit 95% of the domestic and light commercial split system air conditioning market. From 2.5kw right through to 15kw upright units.



Large Polyslab

| Hamer Code | Reference Number | Size | Weight | Load Capacity |
|------------|------------------|-------------------|--------|---------------|
| PS1130 | PSAC-LGE | 1130 x 650 x 51mm | 6.8 | 160kg |

Designed for large ducted systems and multiple mini-split system air conditioning units.



2 in 1 Design Polyslab

| Hamer Code | Reference Number | Size | Weight | Load Capacity |
|------------|------------------|------------------|--------|---------------|
| PS690 | PSHWS-LGE | 690 x 690 x 51mm | 2.5kg | 500kg |
| PS695 | PSHWS-SML | 500 x 500 x 51mm | 1.6kg | 500kg |

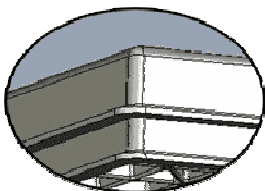
The 2 in 1 design removes the need for a concrete base and anti corrosion pad or `pizza`. Built to AS/NZ 3500.4 Standards. Improved surface/ground contact allows for greater stability, especially compared to that of other plastic products on the market. Built to accommodate more than 95% of residential and light commercial Hot Water Systems. Priced the same, if not better, than ripple top concrete slabs.



Tray Polyslab

| Hamer Code | Reference Number | Size | Weight | Load Capacity |
|------------|------------------|---------|--------|---------------|
| PSTRAY | PSTRAY | Various | 2.1kg | 500kg |

Will not dent or damage easily, unlike a steel or copper tray, whilst being only a fraction of the price. Built to accommodate 95% of residential and light commercial Hot Water Systems.



Polyslabs are designed to be stackable, dramatically reducing freight and warehousing costs.



Motor Acc., Refridg. & A/C
POLYSLAB



D5